

PRINTERS' PRESS

NEXT EVENT

**MONO Y MONO
OPENING RECEPTION**
January 12, 2012
7:00–8:00 pm
THE GALLERY AT THE J
Dell Jewish Community Center

OPPORTUNITIES



Nexus in Texas
Live Oak Art Center
Deadline: March 15, 2012

WPA will present *Nexus in Texas*, a juried art exhibition of contemporary printmaking open to national and international artists to be held at the Live Oak Art Center in Columbus, Texas from July 7th–August 18th, 2012. This exhibition is open to all artists in any print media and is devoted to fostering a deeper understanding of the current worldwide trends in printmaking. The jurors include printmakers Jean Gumper from the Colorado College and Margie Simpson from The University of Texas and Slugfest Printmaking Workshop in Austin, Texas. There will be three cash awards: First Place \$300, Second Place \$200, and Third Place \$100. Entries will be due **March 15, 2012**. Visit the website at <http://www.womenprintmakers.com/Nexus> for details or email Carol Hayman at chayman@austinctc.edu for the full prospectus.



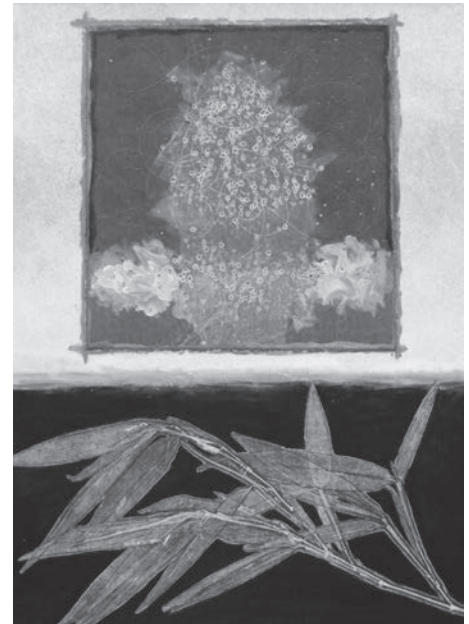
INFO@WOMENPRINTMAKERS.COM
WWW.WOMENPRINTMAKERS.COM

WPA TO KICK OFF 2012 WITH “MONO Y MONO” SHOW

by Cathy Savage

It's an idea that's been bouncing around in our organization for years and it's finally coming to fruition: WPA's first monotype/monoprint exhibit titled *Mono Y Mono*, will be held at The Gallery at the J, at the Dell Jewish Community Center, 7300 Hart Lane, Austin. The opening reception will be held on **Thursday, January 12th from 7–8 pm**. The exhibit runs from January 10–February 28. Regular gallery hours are Monday–Friday, 8:00 am–8 pm; Saturday, 12:30–6 pm; and Sunday, 8:00 am–5 pm.

As our first Monotype/Monoprint exhibit, we had several members enter and gain acceptance to the show which was juried by Santa Fe artist Ron Pokrasso, who specializes in this form of printmaking. Several non-members also entered and were accepted, and together with WPA members, we have a very strong show to exhibit. The J has asked that we make a presentation at our opening so that viewers can hear more about printmaking and our techniques and processes. We would also like to have a hands on activity and plan on having a gelatin printmaking station for a



CATHERINE SMALL, *Chaos Theory*, Monotype

make and take monotype project. If you're interested in being part of the opening night agenda or helping with the printmaking activity, please contact Cathy Savage at csavage@savageartist.com.

WPA TO VISIT BLANTON PRINT ROOM IN FEBRUARY

by Deborah McLouth

From behind a very secure door, Catherine Zinser, Print Room Manager, emerged with a slim portfolio of prints. Carefully, she placed each print on the display shelves in the H-E-B Study Room. First up, *Hanging Raven* by Henri Guerard (1846-1897), a print with the most velvety black marks, distinctive of a drypoint on copper. Next, three works from the *Floating World* of Japanese woodblock prints with their precisely cut black lines and a range of hues in indigo, rose-red, and organic yellow. On the table lay four prints by the contemporary Cuban artist, Eduardo Ponján—ink jet transfers on ledger paper with weirdly familiar symbols of modern life.

For the next 30 minutes, Catherine and I talked about the prints; comparing, contrasting

and often just silently staring at the unique marks of each artist. No frames. No glass. Nothing between us and the hand of the artists except paper, ink, a continent and a couple of centuries.

This is one of the most intimate ways to look at works on paper and it is available to the public through the Julia Matthews Wilkinson Center for Prints and Drawings in the Blanton Museum of Art on the campus of The University of Texas. Approximately 13,500 prints and 1,500 drawings, from the 15th century to the present, are available to individuals and groups to view in the print study room.

Appointments are necessary to visit this part of the Blanton and the WPA has scheduled one for **February 16, 2012**. Limited to 20 participants, this is an event

that is sure to have members talking for hours. Catherine Zinser will put together a collection of prints, including the works of Guerard and Ponján, exclusively for WPA participants to view.

Admission to this event is \$8 and this fee goes into the WPA Blanton Print Acquisition Fund. This fund was set up to support the WPA mission to educate the public about printmakers and techniques through the purchase of a print to donate to the Blanton collection of works on paper. You can support this goal with participation in this event or by adding something extra when you renew your membership.

Sign up now on the WPA website to attend. If you have questions or would like to request viewing of a specific artist or print, please contact Deborah McLouth.

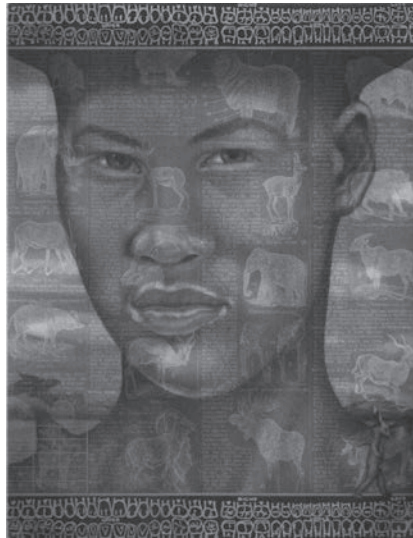


Women Printmakers of Austin
PO Box 33271
Austin, Texas 78764

DECEMBER FEATURED ARTWORK



NAVAGE, SHARON. *On the Edge of the World*, Relief/digital with collage



SUSAN R RANDLE. *Unbroken*, Polymer etching

On the Edge Trade Portfolio

Visit the website to view more images from the portfolio.

This project is funded and supported in part by the City of Austin through the Cultural Arts Division.

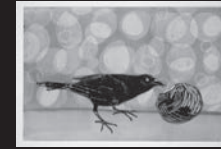


NEWS FROM OUR MEMBERS

Lynne Hubner is co-teaching the workshop *Peace in Action Through Printmaking and Written Word* at Ghost Ranch in Abiquiu, NM, on October 7–13th 2012, with writer Michele Bernard. Visit www.ghostranch.org for more information. Also, her large-scale woodcut, *Texas Pride*, is included in the 2012 *Fine Art in Dallas Art Engagement Book*. She is presently working on illustrations for a children's book about the exploits of Chester the cat who lives at Chestnut Square that will benefit Historic Chestnut Square and the Music and Arts Guild of McKinney. Lynne just sent off her woodcut to the *Monumental Collaborative Puzzle Print City of the World* project. Visit puzzleprints.blogspot.com.

Anna Marie Pavlik won Best of Show, Fine Arts at the Kentucky State Fair 2011 Louisville, Kentucky with *Tatanka, Great Plains*. This was quite an honor and especially rewarding since an etching won over other mediums.

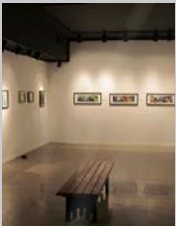
CATHY SAVAGE WINS WPA LONE STAR AWARD



Congratulations to member, Cathy Savage, winner of the 2011 Lone Star Award. This award is presented to a single WPA member who has contributed significantly to the group over the past year and is selected through a vote by the general membership. Cathy was honored at the WPA Holiday party and received a gift card to Jerry's Artarama. To learn more about Cathy's art and ideas, visit her website at <http://www.savageartist.com/> and her blog at <http://craftysavage.blogspot.com/>.

ART MARKETING BOOK GROUP TO START IN 2012

Cathy Savage has offered to lead interested members in a group that explores the marketing book and worksheets for *I'd Rather be in the Studio* by Alyson B. Stanfield. Cathy and has benefited over the last year by following the advice of Stanfield's book and by meeting regularly with member Carolyn Kimball to discuss marketing and art goals. The book group is designed for artists wishing to take the next step in their art careers by setting and pursuing marketing goals, and will build a community of like-minded members poised to move their careers forward. The meetings are open to all members. However, to really benefit from the course, a commitment should be made to attend all meetings and complete assignments. More information will be coming out on the book group in the weeks to come.



WPA Workshops 2012



Visit www.womenprintmakers.com/workshops for more information!

Lithography without a Stone

March 24th 10 to 5pm Instructor: Anna Kinbar

One day workshop exploring pronto plate lithography, a recently developed process that involves a nontoxic form of lithography printing.

Finding an Art Gallery that Fits

April 28th 2 to 5pm Instructor: Cheryl Finrock

With over 6,500 galleries/dealers in the US alone, how do you find the right one? Cheryl Finrock will help identify the tools to assist you in this process. Learn how to research the facts before submitting your portfolio!

Experiments with Solarplate

June 9th 10 to 4pm Instructor: Carol Hayman

The process of creating solar plates uses non-toxic light, water and the intaglio press. We will be trying some experiments with making solar plates, including sun exposure.

Intaglio: Line Etching

June 23rd & 24th 10 to 5pm Instructor: Belinda Casey

Etching is a traditional method of making prints from a metal plate which has been bitten with acid. All skill levels welcome.

Aquatint

July 21st & 22nd 10 to 5pm Instructor: Belinda Casey

A traditional etching technique used to create tone.

Reductive Block Printing

Sept 15th 10 to 5pm Instructor: Lynne Hubner

Achieve multi colored prints through stencils and reductive carving during this one day intensive. Learn registration techniques and watercolor effects with litho inks. Clean-up will be human and earth friendly.

Encaustic

Oct 6th 10 to 4pm Instructor: Cathy Savage

In this one day workshop students will learn the basics of collaging with encaustic medium, creating complex layered pieces of work on wooden panels. No previous experience with encaustic is required.